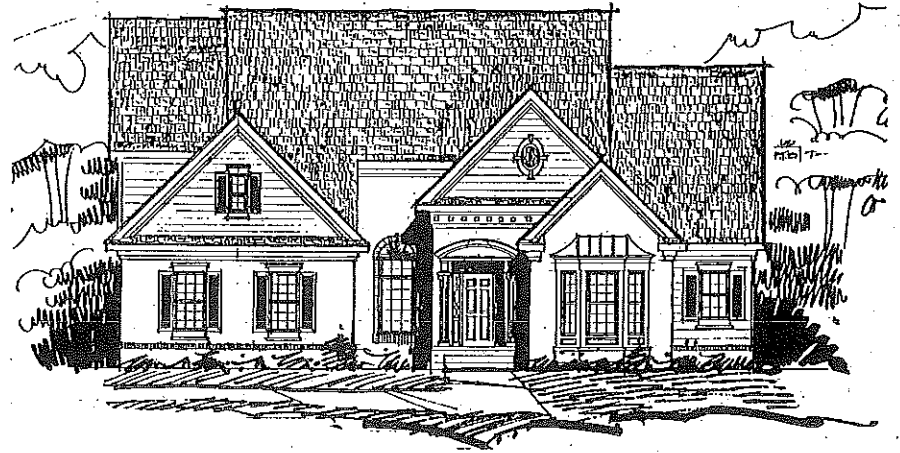
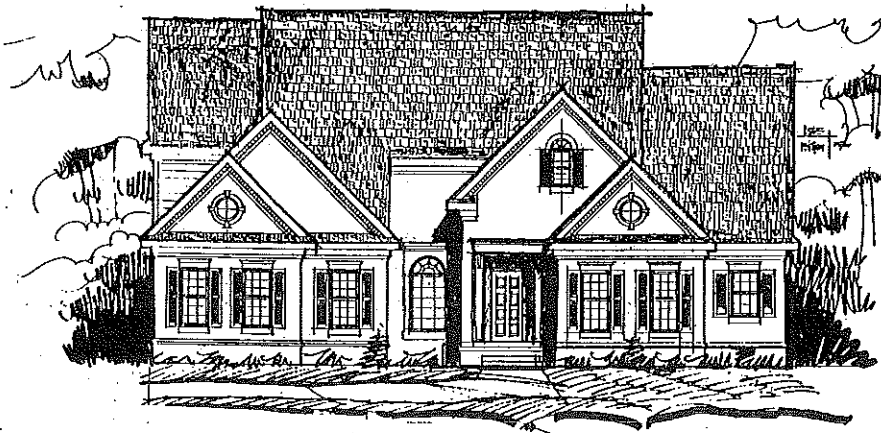


# THE HARTFORD



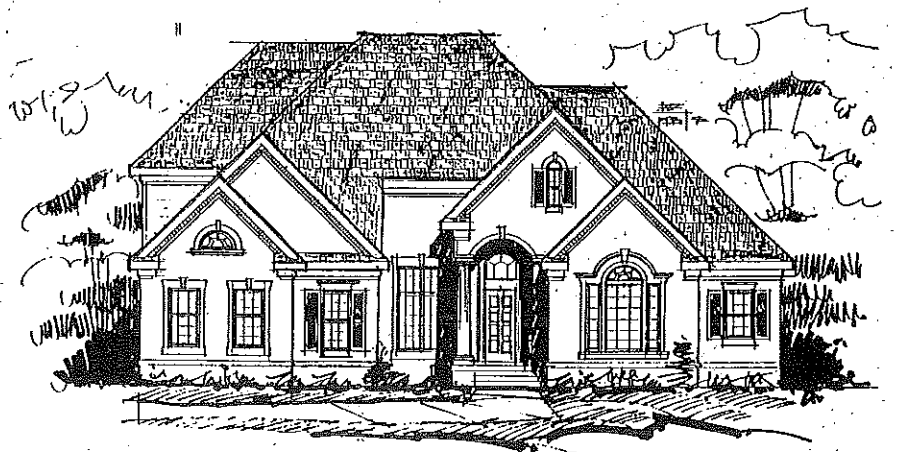
Elevation A

A graceful arched pediment tops the columned entry of this traditional elevation. Brick and lap siding combine with interesting window treatments to recall the details of classic homes.



Elevation B

Georgian influence distinguishes this elevation with windows that include shuttered traditionals, circle-tops and round gable windows. Extensive use of brick and a recessed entry highlight this classic home.



Elevation C

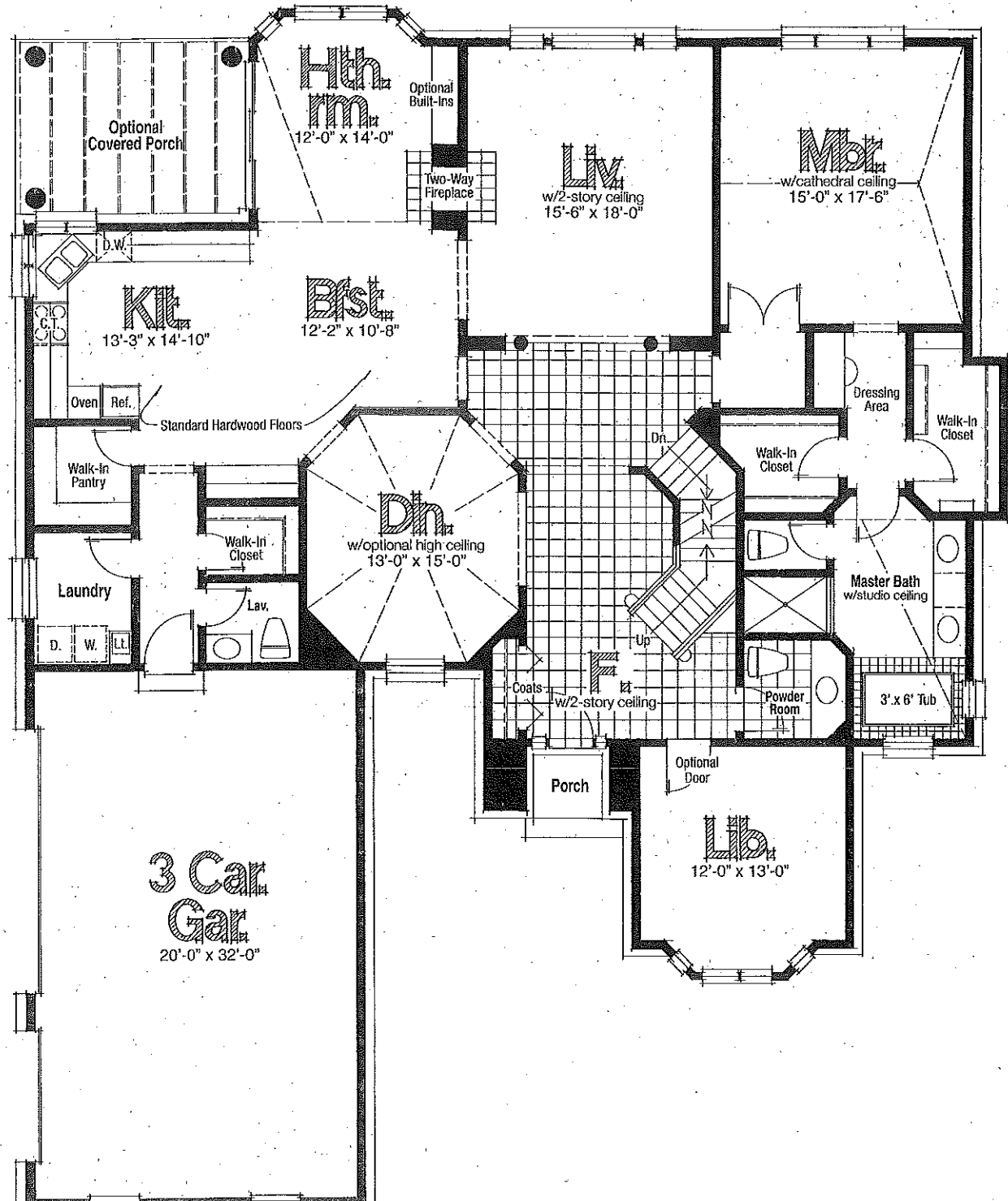
A column and graceful curving arch over the front entrance give this Georgian elevation a stately appearance. A Palladian window, extensive use of brick, stone and dentil molding enhance this home's beautiful exterior.

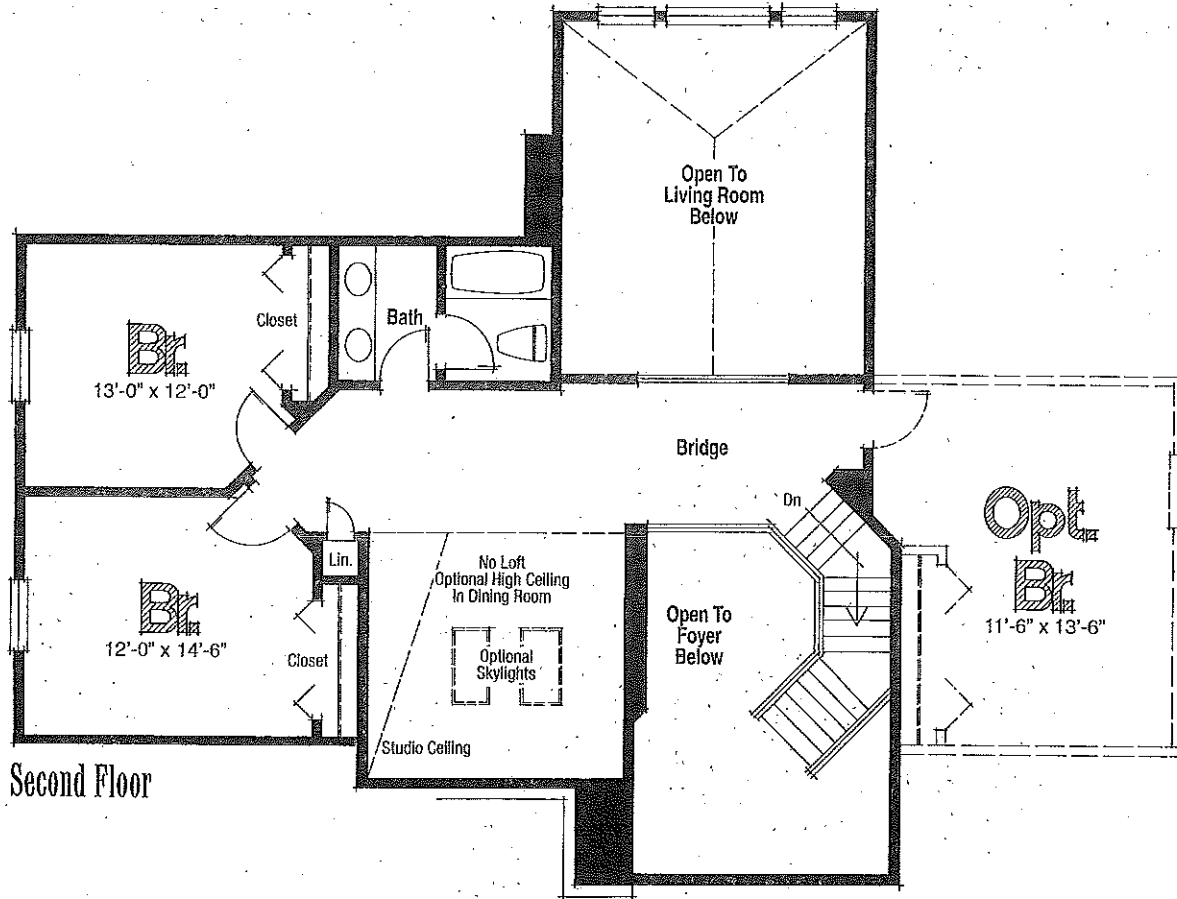
# THE HARTFORD

*Bedrooms: 3-4*  
*Baths: 2 Full, 2 Half*  
*Square Footage: 3,193 – 3,423*

A graciously proportioned two-story foyer provides views of this sophisticated interior in every direction. To the right, a dual-entry staircase is designed for glamour and convenience. To the left, an octagonal shape lends an artistic dimension to the dining room which may include a dramatic vaulted ceiling. A two-story living room boasts towering windows and a two-way fireplace shared with this home's unique hearth room. Luxury is heightened in the first floor master suite with a cathedral ceiling in the bedroom area and a studio ceiling in the lavish, compartmentalized bath.

Upstairs, a bridge affords lofty views of the foyer and living room. The second floor offers a choice of plans with two bedrooms, one bath, or three bedrooms, two baths.





**Second Floor**

The renderings are the artist's conception. Floor plans are intended to serve as a general guide, not to accurately depict the legal description of the property's walls, boundaries, dimensions, scale of rooms or their relative locations. We cannot provide any warranties or representations that the actual and depicted description will not differ. Features subject to change without notice.

